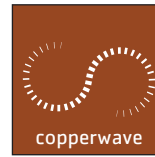
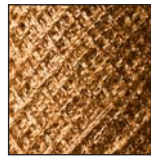


COPPER



250 MHz cat. 6

UTP 6

According to



DX31**-*

- > IEC 61156
- > EN 50288-6
- > IEC 11801 2nd Ed.
- > EN 50173 2nd Ed.
- > EIA/TIA 568 B.2.1

1st ISSUE 2006

ARCHITECTS OF LIGHT

COPPER

250 MHz cat. 6

UTP 6

As a global manufacturer of telecom products, Prysmian offers the market an integrated set of components, systems, engineering and installations for turn-key projects in the field of Premises, leading the transition from Copper to Fibre Optic.



Applications

This Hi-Performance Unfoiled Twisted Pair cable is designed to fulfill and exceed the CAT.6 requirements of the most common Cable Standards - IEC 61156 - EN 50288-6 - as well as the CLASS E described by the Structured Cabling International Standards - IEC 11801 2nd Ed.- EN 50173 2nd Ed. - EIA/TIA 568.B.2.1. Suitable for transmission of digital and analogue voice, data and video signals, this design supports ISDN, Ethernet 10 Base-T, Fast Ethernet 100 Base-T, Gigabit Ethernet 1000 Base-T, Token Ring 4/16 Mbit/s, TP-PMD/TP-DDI 125 Mbit/s, ATM 155 Mbit/s. Afumex[®], the special LSOH Prysmian compound, is attractive where the generation of smoke or toxic emissions is potentially hazardous to people or equipment.

Flame
retardant



IEC 60332-1
EN 50265

Fire
retardant



IEC 60332-3
EN 50266

HCL



IEC 60754-2
EN 50267
Afumex[®] only

Smokes



low
IEC 61034
EN 50268
Afumex[®] only

EMC



Bending



op: ≥ 30 mm
inst: ≥ 60 mm

Temperature



op: -20 °C/ $+70$ °C
inst: 0 °C/ $+50$ °C
sto: -40 °C/ $+70$ °C

Tensile



≤ 110 N

DX31



CONSTRUCTION (NOMINAL VALUES)

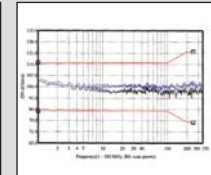
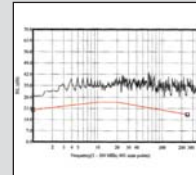
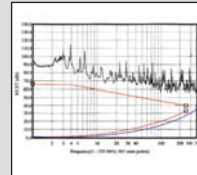
cat. 6

| | | | | |
|---------------------|----------------------|----------|-----------|----------|
| Conductor | annealed copper wire | | AWG | 24 |
| Insulation | solid polyethylene | diameter | mm | 0,98 |
| Outer sheath | PVC or Afumex® | single | diameter | 5,9 |
| | | siamese | outer dim | 5,9x11,9 |
| Weight | single | | kg/km | 38 |
| | siamese | | kg/km | 77 |

ELECTRICAL CHARACTERISTICS AT 20 °C (TYPICAL VALUES)

GRAPH

| | | |
|------------------------------|---|-----------------|
| Operating Voltage | ≤ | 125 Vdc |
| DC Loop Resistance | ≤ | 170 Ω/km |
| Capacitance Unbalance | ≤ | 1600 pF/km |
| Input Impedance | | 100±15 Ω |
| NVP @ 100 MHz | | 0,68 c. nominal |
| Skew @ 100 MHz | ≤ | 15 ns/100 m |
| LCL | ≥ | 40 dB |
| RL headroom | > | 7 dB |
| NEXT headroom | > | 9 dB |
| PS-NEXT headroom | > | 8 dB |
| ACR @ 250MHz | > | 18 dB |
| PS-ELFEXT headroom | > | 6 dB |



ORDERING CODE

| cable | code | sheath | std colour | length | packaging | marking |
|----------|----------|--------------|----------------|--------|-----------|--|
| UTP 4P | DX3105-3 | Afumex® LSZH | Green RAL 6018 | m 305 | box | PRYSMIAN DX3105 - UTP 4x2x24AWG LSZH - CAT. 6 350 MHz ISO/IEC |
| UTP 4P | DX3105-5 | Afumex® LSZH | Green RAL 6018 | m 500 | drum | 11801 - EN 50173 - EIA/TIA 568.B.2.1 - SGS CERTIFIED YWWY metric m |
| UTP 4P | DX3105-1 | Afumex® LSZH | Green RAL 6018 | m 1000 | drum | |
| UTP 4P | DX3100-3 | PVC | Grey RAL 7001 | m 305 | box | PRYSMIAN DX3100 - UTP 4x2x24AWG - CAT. 6 350 MHz ISO/IEC |
| UTP 4P | DX3100-5 | PVC | Grey RAL 7001 | m 500 | drum | 11801 - EN 50173 - EIA/TIA 568.B.2.1 - SGS CERTIFIED YWWY metric m |
| UTP 4P | DX3100-1 | PVC | Grey RAL 7001 | m 1000 | drum | |
| UTP 2x4P | DX3125-5 | Afumex® LSZH | Green RAL 6018 | m 500 | drum | PRYSMIAN DX3125 - UTP 2x(4x2x24AWG) LSZH - CAT. 6 350 MHz ISO/IEC |
| UTP 2x4P | DX3125-1 | Afumex® LSZH | Green RAL 6018 | m 1000 | drum | 11801 - EN 50173 - EIA/TIA 568.B.2.1 - SGS CERTIFIED YWWY metric m |
| UTP 2x4P | DX3120-5 | PVC | Grey RAL 7001 | m 500 | drum | PRYSMIAN DX3120 - UTP 2x(4x2x24AWG) - CAT. 6 350 MHz ISO/IEC |
| UTP 2x4P | DX3120-1 | PVC | Grey RAL 7001 | m 1000 | drum | 11801 - EN 50173 - EIA/TIA 568.B.2.1 - SGS CERTIFIED YWWY metric m |

About Us

Prysmian is a global market leader in optical cables, supplying a major part of the world's optical cable needs. With a strong heritage of highly advanced R&D, Prysmian is at the leading edge of the technology.

With a worldwide manufacturing presence in 12 countries and in 4 continents Prysmian's global experience and local manufacturing capacity is a significant force in the international marketplace, assuring continuity of supply and high level of service.

Prysmian's optical technology encompasses optical fibers, cables, connectivity, projects and services ensuring that not only the right cable but the right total optical communication system is matched to our customers' needs.

Prysmian offers a complete service from design planning, manufacture and installation through to technical support of commissioned cable networks. Planning and surveying are the cornerstone of our operation, with quality maintained through the expertise and dedication of all our staff working across the business to ISO 9001 and 14000 standards.

When a project is in Prysmian's hands, our customers can depend on a total quality service.

Specifications are subject to change without notice. Cable are designed and tested according to the main national and international specifications (IEC specifications).

dega design group